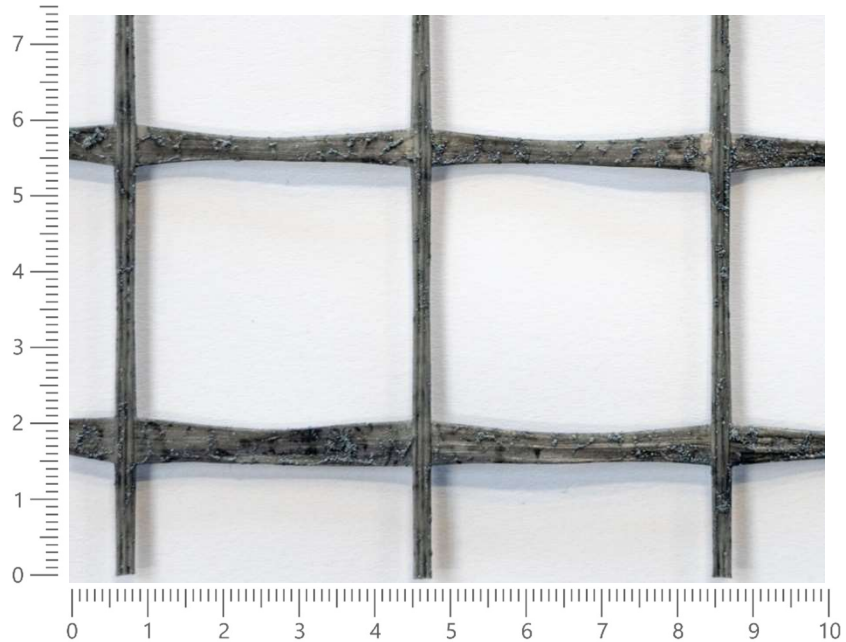


solidian
Primafloor 130 +



Specifications		Unit	Value	Tolerance	Standard	
Fiber material	E/ECR-Glass	-	-	-	-	
Impregnation material	Styrene-butadiene + Filler	%	≥9	-	ISO 1887:2013	
Basis weight	-	g/m ²	130	±10%	ISO 3374:2000	
Width	-	cm	50-200	±2,5	ISO 22198:2006	
Length	-	m	2-100	-	ISO 22198:2006	
Ash content	-	%	≤80	-	EAD 260057-00-0303	
Organic content	-	%	≥20	-	EAD 260057-00-0303	
			Warp	Weft		
Mesh size (Midle)	Warp	mm	40,0	40,0	±3	EAD 260057-00-0303
Elongation (Average value)	Warp	%	3,42	3,85	-	EAD 260057-00-0303
Breaking Force (Average value)	Warp	kN/m	33	43	-	EAD 260057-00-0303



Information

1. Concrete components

1.1. Textile concrete components are currently not subject to any building authority approvals (standards, guidelines etc.). In the case of structural building sites, building authorities must be consulted with test stators, experts etc. and country-specific regulations must be observed (e.g. approvals of specific cases).

1.2. It is recommended to check these values in the concrete component (on site the prefabricated concrete plant) in order to detect individual influences from the concrete mix.

1.3. Consider working temperatures and resistance, installation only by trained staff, use suitable concrete mixtures, wear safety gloves and goggles. Please, consider additional protective measures!

1.4. The tensile strength was derived from experimental investigations based on roving tests. The values provided here represent short-term static tensile strength. At room temperature (20°C); the influences of durability, long-term loads, cyclic stresses etc. are not taken into consideration.

1.5. Since non-metallic reinforcements are not regulated in local standards or guidelines in most countries, for structural members building authorities, structural engineers, experts, etc. Must be involved and local regulations must be observed (e.g. approval in individual cases).

2. Certifications

2.1. Our Management System is in accordance with the requirements of the management system standards ISO 9001:2015 and ISO 14001:2015.

3. Disclaimer

3.1. We believe this information to be reliable, but do not guarantee its applicability to the user's process or assume any liability arising out of its use or performance. The user, by accepting the products described herein, agrees to be responsible for thoroughly testing any application to determine its suitability before committing to production. Because of numerous factors affecting results, we make no warranty of any kind, express or implied, including those of merchantability and fitness for a particular purpose. Kindly note that under certain conditions the properties can be affected to a considerable extent by the machining or processing. Application, use, and processing of products is affected beyond our possible control, and accordingly is the sole and exclusive responsibility of recipients. Statements in this data sheet shall not be construed as representations of warranties or as inducements to infringe any patent or violate any law, safety code or insurance regulation.

3.2. Subject to change without notice. When a new technical data sheet is published, all previous technical data sheets are no longer valid.

