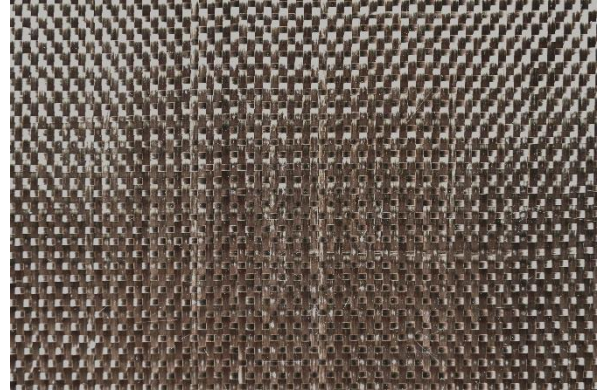


TECHNICAL DATA SHEET

kelteks WOVEN ROVING
Basalt-390-PL-BBX-50/33



| Specifications | | Unit | Value | Tolerance | Standard |
|----------------------|----------------------------|------------------|---------|-----------|----------------|
| Fiber material | Basalt | - | - | - | - |
| Input material warp | Basalt Roving | tex | 600 | - | - |
| Input material weft | Basalt Roving | tex | 300 | - | - |
| Shape | Roll | - | - | - | - |
| Basis weight | - | g/m ² | 400 | ± 5% | ISO 3374:2000 |
| Width | - | cm | 67 | -0 / +2 | ISO 22198:2006 |
| Length | - | m | 500 | - | ISO 22198:2006 |
| Density | Warp | threads/10cm | 50 | ± 1 | ISO 4602:2010 |
| | Weft | threads/10cm | 33 | ± 1 | ISO 4602:2010 |
| Weave | Plain | - | - | - | ISO 2113:1996 |
| Width of endings | - | mm | 12 - 15 | - | - |
| Edges implementation | Leno weave with glass yarn | - | - | - | - |
| Cardboard diameter | - | mm | 150 | - | - |

build solid.

Kelteks d.o.o.
 Dr. Slavka Rozgaja 3
 47000 Karlovac, Croatia – EU
 sales@solidian-kelteks.com
 www.kelteks.com
 +385 47 693 314

solidian GmbH
 Sigmaringer Straße 150
 72458 Albstadt, Deutschland – EU
 info@solidian.com
 www.solidian.com
 +49 7431 10-3135



Information

1. Composite components

1.1. Compatible with a wide range of standard resin systems.

2. Certifications

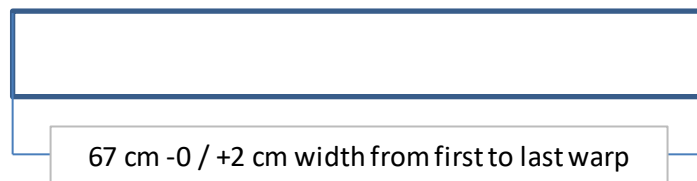
2.1. Our Management System is in accordance with the requirements of the management system standards ISO 9001:2015 and ISO 14001:2015.

3. Disclaimer

3.1. We believe this information to be reliable, but do not guarantee its applicability to the user's process or assume any liability arising out of its use or performance. The user, by accepting the products described herein, agrees to be responsible for thoroughly testing any application to determine its suitability before committing to production. Because of numerous factors affecting results, we make no warranty of any kind, express or implied, including those of merchantability and fitness for a particular purpose. Kindly note that under certain conditions the properties can be affected to a considerable extent by the machining or processing. Application, use, and processing of products is effected beyond our possible control, and accordingly is the sole and exclusive responsibility of recipients. Statements in this data sheet shall not be construed as representations of warranties or as inducements to infringe any patent or violate any law, safety code or insurance regulation.

3.2. Subject to change without notice. When a new technical data sheet is published, all previous technical data sheets are no longer valid.

4. Additional product information:



build solid.

Kelteks d.o.o.
Dr. Slavka Rozgaja 3
47000 Karlovac, Croatia – EU
sales@solidian-kelteks.com
www.kelteks.com
+385 47 693 314

solidian GmbH
Sigmaringer Straße 150
72458 Albstadt, Deutschland – EU
info@solidian.com
www.solidian.com
+49 7431 10-3135

